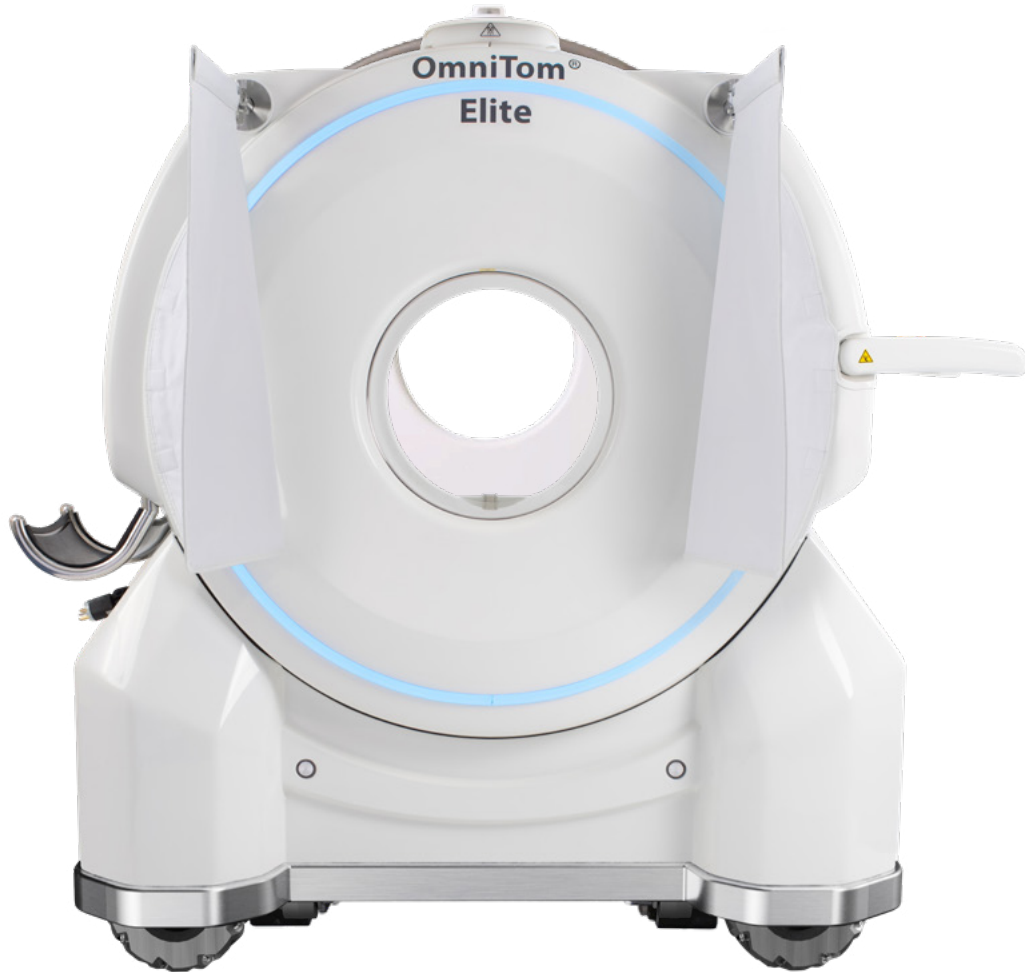


sound™

Powered by Antech™



OmniTom® Elite

Superior Imaging. Smarter Care.



OmniTom® Elite

OmniTom® is a 16-slice, mobile CT scanner designed to deliver high-resolution imaging where and when you need it. With ultra-fast scan times, an intuitive user interface, and a compact, self-shielded design, OmniTom brings advanced CT technology to the point of care — helping you diagnose with confidence in even the most critical situations.

Advanced In-House CT Imaging

OmniTom offers high-quality CT scans, non-contrast and contrast enhanced examinations, and advanced clinical imaging procedures — like CT angiography and CT perfusion.

- **16-Slice Detector:** Provides high-resolution 0.625 mm slices for exceptional detail.
- **2D, 3D & Multi-Planar Reconstructions**
- **Fast Image Reconstruction:** 16 frames per second; images are available for immediate review.
- **Axial, Helical, and Dynamic Modes:** Versatile scanning for a wide range of clinical needs.
- **CT Perfusion and Angiography:** Includes bolus tracking and dynamic imaging for advanced diagnostics.

Compact, Mobile, and Easy to Use

Designed for fast-paced environments, OmniTom moves easily through tight clinic spaces and delivers seamless operation:

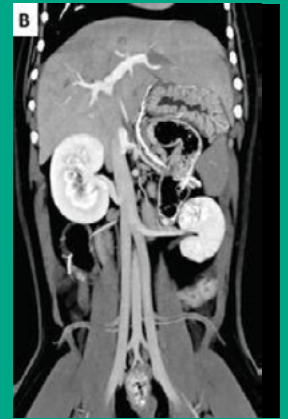
- **Battery Powered & Self-Shielded:** No dedicated room or special build-out required.
- **Omni-Wheel Movement:** Enjoy smooth, precise mobility in every direction — lateral, diagonal, and full 360°.
- **Enhanced Safety:** A built-in beacon light ring with customizable colors clearly indicates the system's status—changing colors to alert the operator when the system is in transport mode, scan mode, or when the X-ray is active."
- **Standard 110V Input:** Charges quickly and fits into standard veterinary practice infrastructure.
- **Wireless Connectivity:** Transmit and view images anywhere — no cords required.

Built for the Demands of Modern Veterinary Practice

From critical care to high-throughput environments, OmniTom is built to handle the pressure:

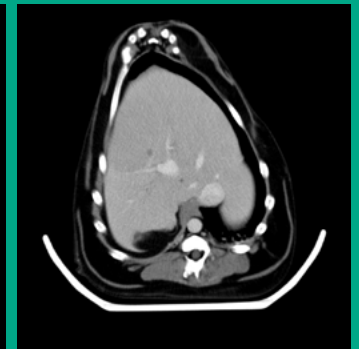
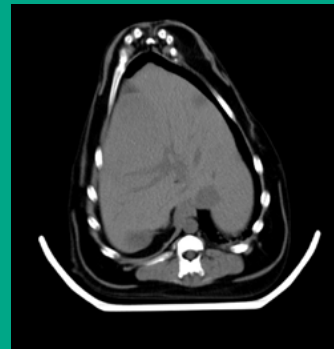
- **Large 40cm Bore Design:** Accommodates a broad range of patient sizes.
- **Ergonomic Layout:** Single-user design with intuitive attachment points and streamlined controls.
- **On-Board Reconstruction Computer:** Speeds up post processing and supports streamlined controls
- **Durable Exterior:** Resilient materials help reduce daily wear and tear.
- **Visual Status Confirmation:** Customizable beacon light ring indicates system status.

CT ABDOMEN WITH CONTRAST MULTI-PLANAR REFORMATS



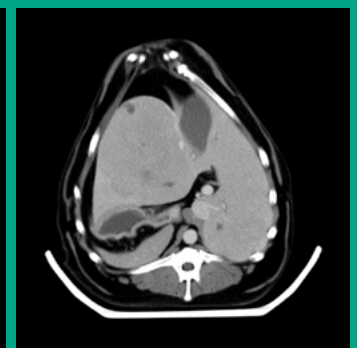
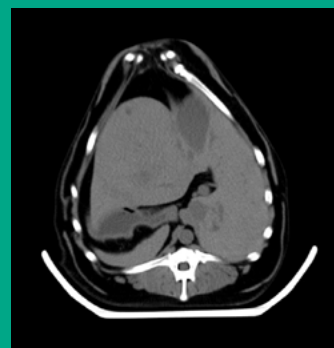
PRE-CONTRAST ABDOMENN

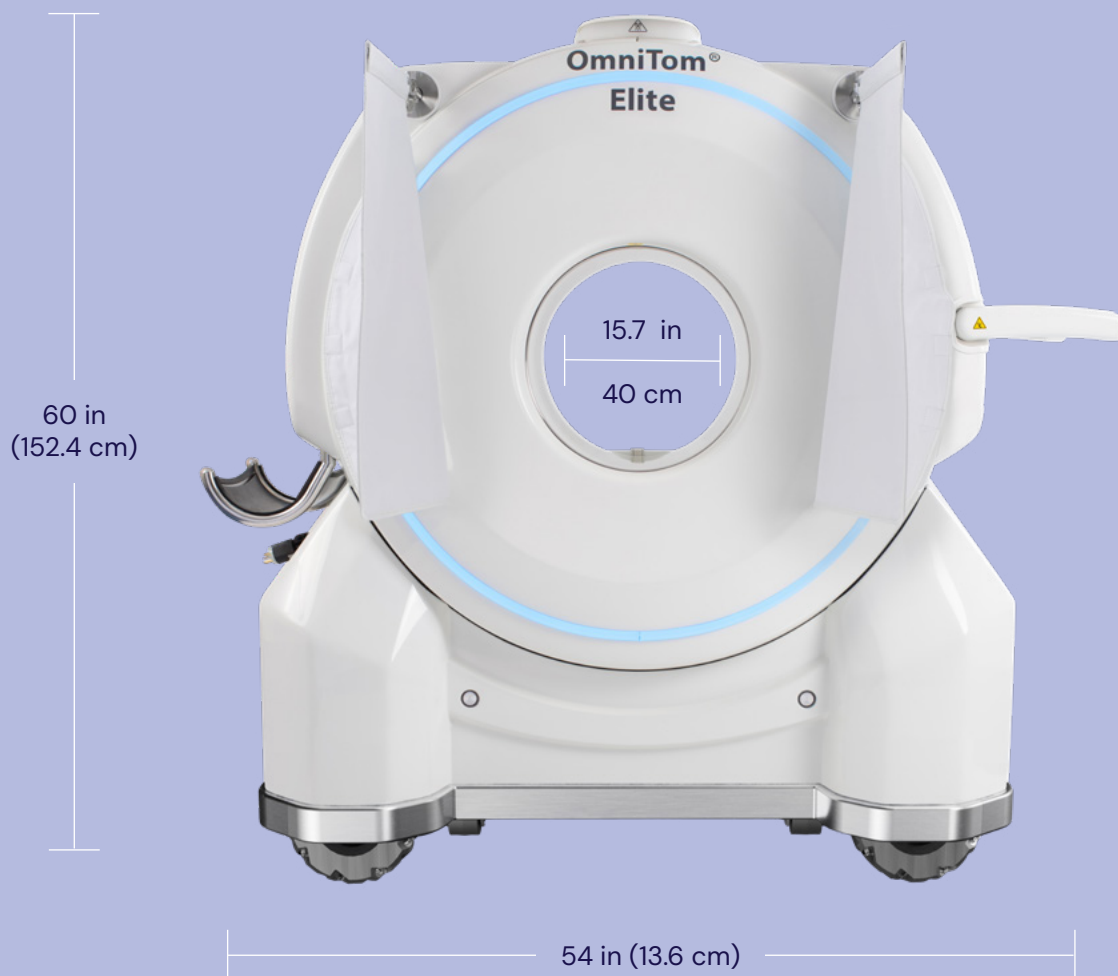
POST-CONTRAST ABDOMENN



PRE-CONTRAST ABDOMENN

POST-CONTRAST ABDOMENN





Features Optimized for Veterinary Medicine

- **Veterinary-Specific User Interface (Beta):** Easy to learn, easy to use.
- **Windows-Based Workstation:** Familiar software and fast processing.
- **Internal Lead Shielding & Safety Curtains:** Allows staff to remain safely present during scans.
- **Minimal Setup Time:** Quickly position, scan, and review — saving valuable clinical minutes.

Ready to Elevate Your Imaging Capabilities? Ask Us About OmniTom Today.



800-872-1001 US • 866-382-6937 CA
q-r.to/omnitom

Superior CT. Superior Care. Anywhere You Need it.

OmniTom brings next-level diagnostic power into your clinic — combining precision, portability, and performance in one versatile system.

Smarter Diagnostics. Better Care.™

At Antech, we pride ourselves on building trusted partnerships that empower more effective, efficient diagnostic decision making for better animal health outcomes.

**With Antech, you also get industry-leading solutions
and support for all your practice's needs.**



Reference Lab

North America's largest veterinary reference laboratory network. Core diagnostics, anatomic and clinical pathology services, expert medical consulting, with industry-leading turnaround times and world-class support.



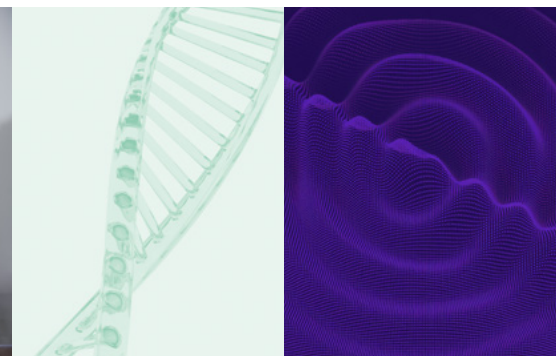
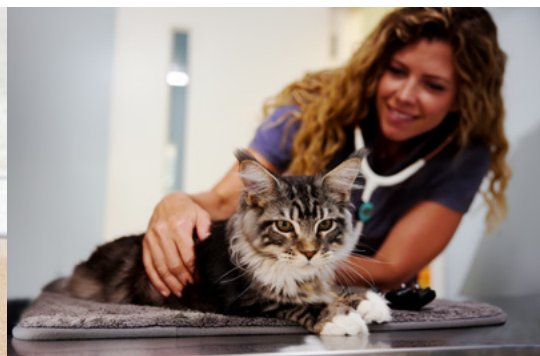
In-House Diagnostics

The most comprehensive in-house diagnostic portfolio on the market, including chemistry, hematology, coag, blood gas/ electrolytes, lateral flow testing, and more.



Sound™ Powered by Antech™

The most trusted diagnostic imaging equipment and solutions — including digital radiography, ultrasound, therapeutic lasers, and CT.



Learn More



800-872-1011 us
800-341-3440 ca
antechdiagnostics.com

© 2025 Antech Diagnostics, Inc. All rights reserved. Antech, Antech logo, and all other trademarks used herein are the trademarks of Antech Diagnostics, Inc. or its affiliates. 101525

