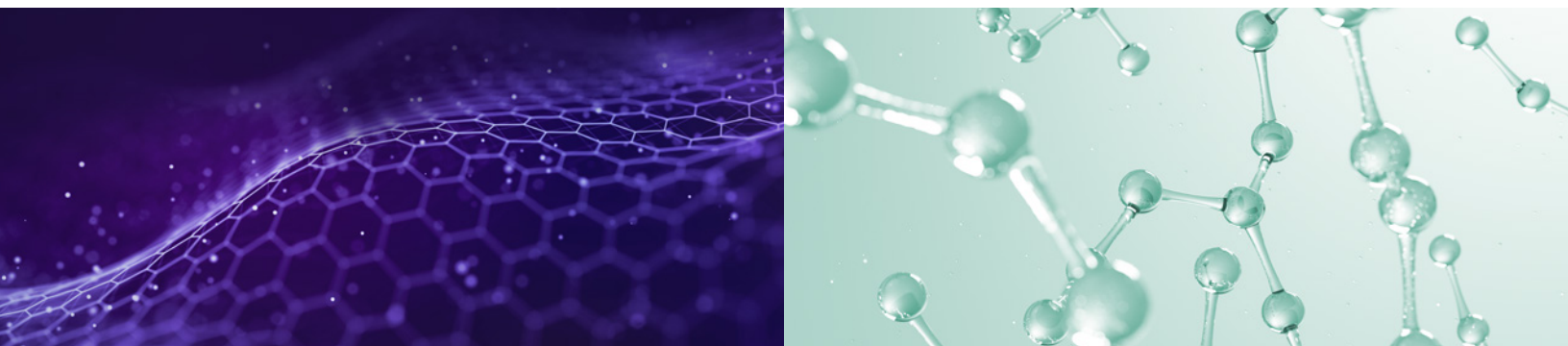


Antech™



LOGIQ Fortis™ Ultrasound

Multi-Purpose, Powerful, and Efficient Ultrasound System



LOGIQ Fortis™ Ultrasound

The LOGIQ Fortis™ is the latest innovation in the LOGIQ platform, designed as a multi-purpose, all-in-one ultrasound system. With its compact, sleek design and advanced technologies, it fits seamlessly into almost any space while offering the strength and flexibility to handle a full spectrum of exams and procedures. Built to optimize productivity, deliver exceptional performance, and maximize your investment, the LOGIQ Fortis is a trusted choice for modern veterinary practices.

Advanced Imaging and AI-Powered Tools

LOGIQ Fortis features cutting-edge **cSound™ Architecture** to deliver superior imaging clarity and streamlined workflow:

- **cSound Technology**
Combines XDclear probes and Speckle Reduction Imaging (SRI) for enhanced data throughput and uniform image quality across all depths.
- **AI-Powered Workflow**
Tools like Measure Assistant, Scan Assistant, and Start Assistant simplify processes and reduce exam times.
- **B-Flow Imaging**
Offers non-Doppler hemodynamic imaging with exceptional clarity of both large vessels and microvascular flow.
- **Cardiac Tools**
Includes cardiac strain, auto ejection fraction (EF), and auto intima-media thickness (IMT) for precise cardiovascular imaging.

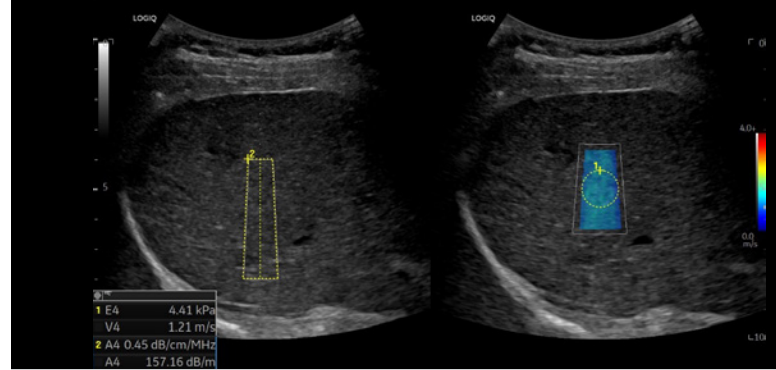
Built for Versatility and Efficiency

LOGIQ Fortis is designed to meet the evolving needs of your practice, providing a reliable solution for a wide variety of veterinary applications:

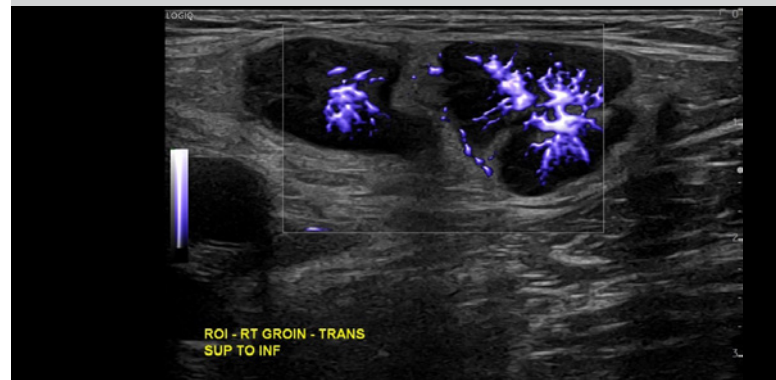
- **Hepatic Assistant**
Combines 2D shear wave elastography and Ultrasound-Guided Attenuation Parameter (UGAP) for comprehensive liver assessments.
- **MVI with Radiantflow™**
Delivers detailed vascular imaging with enhanced sensitivity and high resolution.
- **Full-Spectrum Imaging**
Supports a broad range of exams across all species and patient types, eliminating the need for multiple systems.

Portable and Adaptable Design

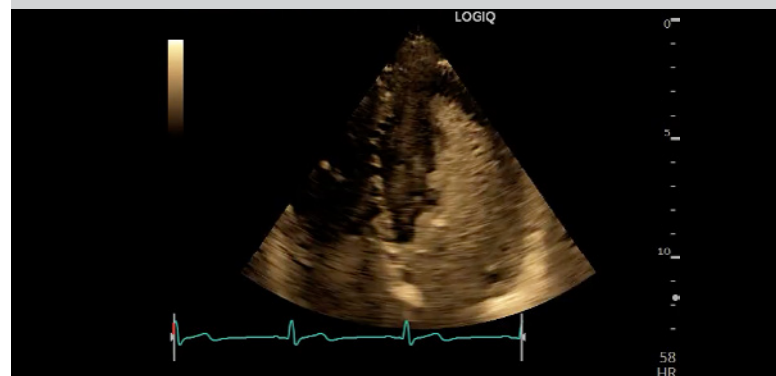
With a lightweight, compact build and 50-minute battery-powered scanning, the LOGIQ Fortis is designed for portability and flexibility. It easily adapts to tight spaces and busy workflows, ensuring you can perform exams anywhere they're needed.



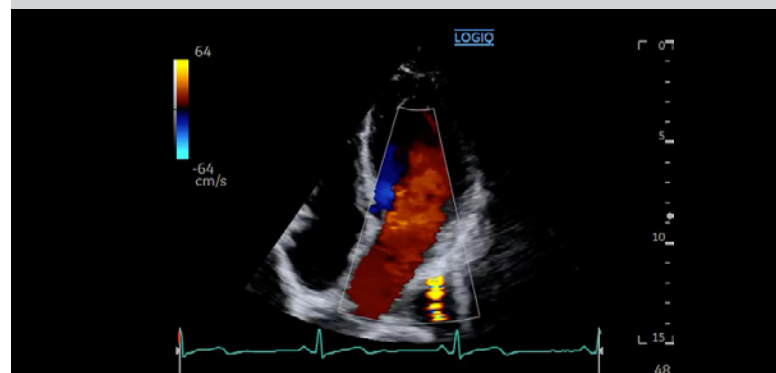
HEPATIC ASSISTANT: COMBINING 2D SHEAR WAVE ELASTOGRAPHY AND UGAP, C1-6-D



MVI WITH RADIANTFLOW™
GROIN LYMPH NODE, ML6-15-D



B-FLOW LEFT VENTRICLE, M5SC-D



COLOR FLOW APICAL 4-CHAMBER VIEW
MITRAL VALVE, M5SC-D

Probe Compatibility for All Your Imaging Needs

LOGIQ Fortis supports a wide range of probes, ensuring versatility for any procedure:

C1-6-D
1.0 – 6.0 MHz



L6-24
6.0 – 20.0 MHz



L4-20t-D
5.0-20MHz



C2-9-D
2.0 – 9.0 MHz



C3-10D
2.0 – 11.0 MHz



ML6-15-D
4.0 – 16.0 MHz



6S-D
2.0 – 8.0 MHz



Experience the confidence,
versatility, and innovation of
LOGIQ Fortis™ in your practice today.

GET STARTED NOW



800-872-1001 us • 866-382-6937 ca
q-r.to/logiq-fortis-25



Antech™

Learn More



800-872-1011 US

800-341-3440 CA

[antechdiagnostics.com](https://www.antechdiagnostics.com)