

NEW



element **HT5+** Veterinary Hematology Analyzer

True 5-Part WBC Differential PLUS Reticulocytes

Advanced Heska Element HT5+™ technology provides an accurate and comprehensive CBC (Complete Blood Count) with a true 5-part differential, including reticulocyte parameters. Get results you can trust in 90 seconds, presented in a sleek designed intuitive color touchscreen interface. The Element HT5+ not only detects white blood cell volume, but cellular complexity and granularity as well. In addition to being accurate and fast, the Element HT5+ remains very simple to use with intuitive navigation, simplified data entry and easy reagent management. Complete CBC fast enough for the busiest clinics.

5-Part Differential + Reticulocytes

Results in 90 seconds

Industry-Leading Technology

Intuitive Touchscreen Interface

Combination Technology

Counting Channels	Technology	Parameters
1 Diff Channel	Laser Flow Cytometry	WBC Diff
2 RET Channel	SF Cube	RET
3 HGB Channel	Colorimetry	HGB
4 RBC/PLT Channel	Impedance	RBC, PLT



RFID Management



Features:

HT5+

+ Test Parameters

White Blood Cell

Total White Blood Cell (WBC)
Neutrophil Number (NEU #)
Lymphocyte Number (LYM#)
Monocyte Number (MON#)
Eosinophil Number (EOS#)
Basophil Number (BAS#)
Neutrophil Percent (NEU%)
Lymphocyte Percent (LYM%)
Monocyte Percent (MON%)
Eosinophil Percent (EOS%)
Basophil Percent (BAS%)

Platelet

Total Platelet (PLT)
Mean Platelet Volume (MPV)
Platelet Dist. Width (PDW)
Plateletcrit (PCT)

Consolidated Results and Reporting

- Combine results using the Heskaview Connect™ program or transmit to your PIMS.
- Rapidly retrieve patient worklist with bi-directional communication.

Easy Reagent Management

- Refill reagents with ease using RFID technology and on-board menu functions.

Intuitive Navigation

- Simplified data entry and patient test review with numeric results, histograms and scatter plots.

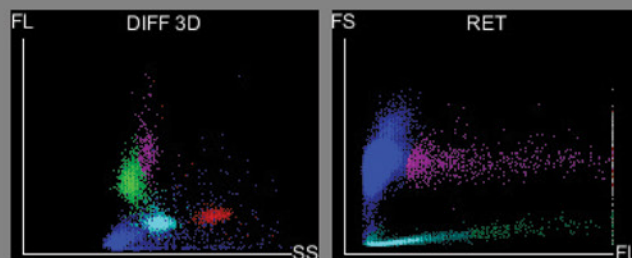
Advanced, 3rd generation dye technology

- More reliable reticulocyte detection

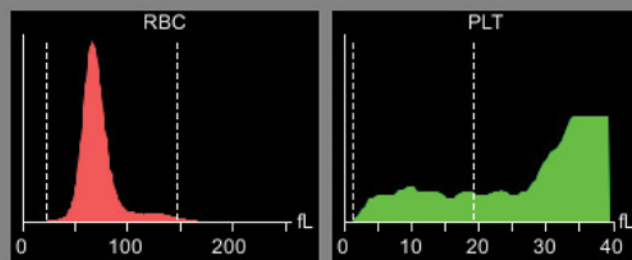
Flags for abnormal cell morphology & populations

- Abnormal Cell Populations
- Immature Granulocytes
- Nucleated Red Blood Cells
- Platelet Clumps
- and more...

Graphical Interpretations



WBC DIFF & RET Scatterplots



RBC & PLT Histograms

Results and Reporting

Easy to Use:

- Web-style links for simple navigation.

Simple Data Management:

- Rapidly retrieve trending data from patient record.

Efficient:

- Assign, unassign or delete multiple items at once.
- Species-specific reference ranges and color-coded flags make it easy to quickly evaluate patient data.