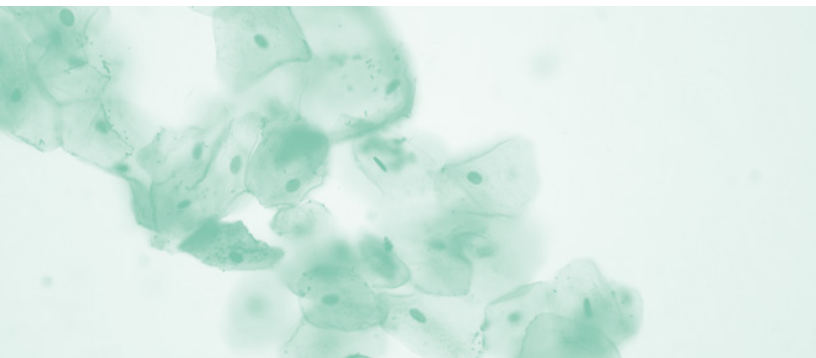
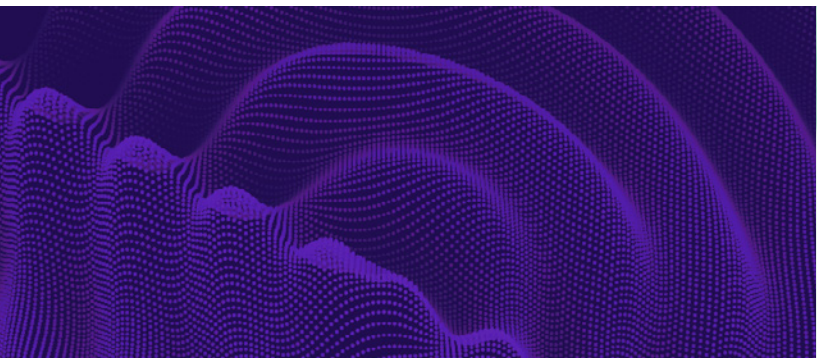


Antech™



Smart-C®

Unparalleled Imaging Performance
in Surgery, Clinics, and in the Field



Smart-C®

Revolutionary in its Versatility and Portability

The world's first battery-powered, completely wireless, hyper-portable, mini C-arm providing unparalleled digital fluoroscopic imaging capabilities. This mini C-arm is designed for use in clinics, operating rooms, in the field at point of injury/care or wherever imaging is desired.

The Smart-C Advantages

- Space saving compact footprint
- Battery-powered, lightweight (16 lbs) carbon fiber, cordless C-arm offering true portability
- Sophisticated software algorithms provide exceptional real-time imaging and anatomical clarity
- Wireless Tablet enables ergonomic placement directly in line of sight for enhanced visualization
- Position the C-arm on its front or side to quickly acquire images, including weight bearing
- 6" x 6" imaging area with superfine 99 μm pixel resolution, for visualization of the smallest anatomical detail
- Wifi or wired image transfer to PACS
- Wireless footswitch
- Agile positioning of C-arm when mounted to support stand
- Compact hindrance free design allows for use directly on the surgical table/arm board
- Custom sterile drapes allow both C-arm and Tablet to be used in the surgical field
- Modular system offers flexibility to purchase the accessories you need.

Full Capability, True Portability

- Rugged transport case protects system during transport and storage. Fully loaded case weighs under 50 lbs
- Collapsible frame for ease of transport and storage
- Each rechargeable C-arm battery lasts 8 hours under normal use
- Integrated ultra capacity LiFePO4 battery powers Monitor, Tablet, C-arm battery charger, and Printer for all day cordless use
- Powerful ultra-compact pulsed X-ray source capable of 40-80 kV (65-370 μA)
- Thinnest C-arm CMOS flat panel detector (1.5") for easy positioning under extremities
- Support Stand uses counterbalanced articulating arm and wrist for hands free C-arm positioning directly in your field of vision



SMART-C Technical Information

SMART-C

Image Receptor	CsI scintillator on Complementary Metal, Oxide Semiconductor (CMOS)
Image Receptor Pixel Array	Image Receptor Pixel Array
Image Receptor Pixel Size	~99 µm
Field of View	Primary collimation: 15 x 15 cm (6 x 6 in), Secondary collimation: 10 cm (4 in) diameter
Tube Voltage Range	40 to 80 kVp
Tube Current Range	130 to 370 µA
Pulse Rate	10 pulses per second
Focal Spot	0.04 mm nominal
Tablet Screen	34 cm (13.3 in) diagonal, 1920 x 1080 resolution, Touchscreen
Live Image	15 cm x 15 cm (6 x 6 in)
Water Ingress	C-arm: IPX3 (spraying water), Tablet: IPX0 (not specified), Footswitch: IPX8 (immersion)
Source to Detector Distance (SDD)	45 cm (17.7 in)
Minimum Source to Skin Distance (SSD)	10 cm (4.0 in)
C-Arm Free Space (Functional SSD)	34 cm (13.4 in)
C-Arm Depth of Arc	31 cm (12.2 in)
Networking	DICOM 3.0 compliant
Wireless Security	WPA2 encryption
Weights	C-arm and battery: 7.2 kg (16.0 lb), Tablet: 1.5 kg (3.3 lb), Footswitch: 0.7 kg (1.5 lb)

MONITOR CART

Monitor	27 in diagonal, 1920 x 1080 resolution, Touchscreen 725 Cd/m ²
Live Image	30 x 30 cm (12 x 12 in)
Printer	Thermal, medical grade
Power	Battery operation (>8 hrs) or 115 VAC
C-arm Battery Charge Bays	2
Keyboard	Waterproof
Weight	65 kg (143 lb)

- DICOM 3.0-compliant and secure via wireless encryption
- FDA Cleared
- US and foreign patents pending
- Follow IFU Safeguards

Intended-use Statement:

The Turner Imaging Systems Smart-C is a mini C-arm X-ray system designed to provide veterinarians with real-time general fluoroscopic visualization of small and large animals. It is intended to aid physicians and surgeons during diagnostic procedures, therapeutic treatment or surgical procedures of the limbs and extremities including, but not limited to, orthopedics and emergency medicine. The Smart-C is intended to be used on a table or other hard, flat surface. It may also be used with the optional support stand.

Learn More



800-872-1001 US • 866-382-6937 CA
q-r.to/smart-c-25

Antech™

Learn More



800-872-1011 US

866-382-6937 CA

[antechdiagnostics.com](https://www.antechdiagnostics.com)